

BLACK EAGLE® SAFETY 40.1 MID

Art. No. 610015



CE EN ISO 20345:2011 S3 HRO HI CI WR SRC

Color: black-blue, Microfibre/textile, waterproof and extremely breathable with GORE-TEX® Extended, leg height 13 cm, antistatic, ESD, sole 019

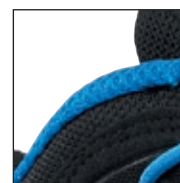
Available sizes UK 3 – 12, Extra large sizes UK 12½ – 15



610015



Vario Wide Fit System



HAIX® Climate System



HAIX® Composite Toe Cap



Upper Material

Microfibre/textile combination.

Inner Lining

GORE-TEX® Extended; waterproof and highly breathable. Abrasion-resistant lining with optimized climate comfort, especially for flexible alternating inside and outside use.

Insert

Comfortable, cushioning and moisture repellent. Separate heel shape for good cushioning and foot insertion. "AIRFLOW" channels. „Perfect-Fit“ mark for an optimal verification of the correct shoe size.

HAIX® Anti Slip

Very good grip on different terrains by profile configuration and use of a special rubber.

HAIX® Absorption

Absorption with cushioning wedge which is built into the sole.

HAIX® Protective Sole

Lightweight and metal free protective sole against puncture from sharp objects.

Sole

Modern, light weight and sporty sole construction with rubber street/terrain tread, abrasion-proof, for enhanced toe-to-heel support, ideal for cold weather conditions. The lightweight PU cushioning wedge provides optimum wear comfort. Excellent thermal insulation.

The non-marking outer sole is resistant to heat and fuel-oil. Compliant with EN ISO 20345:2011.

ESD

Electrostatically conductive footwear tested according to EN 61340-4-3:2002, EN 61340-5-1:2008.

HAIX® Protective Cap

Extra protection and abrasion resistance due to external toe cap.

HAIX® Composite Toe Cap

Anatomically formed and ultralight protective toe cap made of fiber-reinforced plastic for highest safety requirements.

HAIX® Climate System

The HAIX® Climate system uses the pumping movement, which permits air circulation with every step – warm air is released through the Micro-Dry lining at the top of the boot leg.

HAIX® Vario Wide Fit System

The width of the shoe can be individually adjusted by 3 different insoles. The shoe is supplied with a red insole (medium). A yellow insole (wide) and blue insole (narrow) can be ordered separately.

Others

Low weight, metal-free, certified for orthopedic insoles.

UK	3	3½	4	4½	5	5½	6	6½	7	7½	8	8½	9	9½	10	10½	11	11½	12	12½	13	13½	14	14½	15
EU	35	36	37	37	38	39	39	40	41	41	42	43	43	44	45	45	46	47	47	48	48	49	50	50	51
US	4	4½	5	5½	6	6½	7	7½	8	8½	9	9½	10	10½	11	11½	12	12½	13	13½	14	14½	15	15½	16

HAIX®-Schuhe, Produktions- und Vertriebs GmbH

Auhofstrasse 10, 84048 Mainburg, Germany
T. +49(0)8751/8625-0, F. +49(0)8751/8625-25
info@haix.de, www.haix.com