

AIRPOWER® XR3

Art. No. 604102



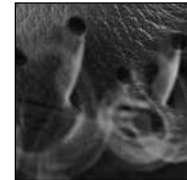
CE EN ISO 20345:2011 S3 HRO HI CI WR SRC

Leather thickness 2.5 – 2.7 mm, waterproof and breathable with GORE-TEX® Performance, reflective strips along heel, leg height 16 cm, antistatic, sole 012

Available sizes: UK 4 – 12, extra sizes: UK 13 / 14 / 15



Vario Wide Fit System



HAIX® Climate System



604102

Upper Material

Waterproof leather, hydrophobized, breathable (5.0 mg/cm²/h), 2.5 – 2.7 mm thick

Inner Lining

GORE-TEX® Performance; waterproof and breathable. Abrasion-proof lining fabric with fleece inner layer. Optimized climate comfort for all seasons even under extreme conditions.

Non-woven insole

Moisture-absorbent fleece insole.

Sole insert

For extra foot comfort and impact-absorbing, moisture-wicking. Separate heel cup ensures optimized cushioning and foot guidance.

HAIX® Composite toe cap

Anatomically formed and ultralight protective toe cap made of fiber-reinforced plastic for highest safety requirements.

HAIX® Protective sole

Flexible, lightweight and protective metal throughsole.

Anti Slip

Excellent grip on a variety of terrains, even in the cold due to specific outsole design and use of special rubber.

Sole

Anti-slip rubber/PU sole with road/off-road profile, abrasion-proof, for enhanced toe-to-heel support, ideal for cold weather conditions. The lightweight PU cushioning wedge provides optimum wear comfort. Excellent thermal insulation. The non-marking outer sole is resistant to heat and fuel-oil.

HAIX® Climate System

The HAIX® Climate system uses the pumping movement, which permits air circulation with every step – warm air is released and fresh air comes in through the vent holes at the top of the boot.

HAIX® CO System

Pressure relief, cushioning, correction of foot position correct posture and muscular balance.

HAIX® Vario Wide Fit System

The width of the shoe can be individually adjusted by 3 different insoles. The shoe is supplied with a red insole (medium). A yellow insole (wide) and blue insole (narrow) can be ordered separately.

Sun Reflect

Sun Reflect reduces the heating effect of the upper leather by direct sunlight. Sunlight is reflected by the leather, keeping the leather and the feet cooler.

Other features

Top-quality non-friction lacing elements reinforced toe section, toe cap, reflective strips across heel area

UK	3	3½	4	4½	5	5½	6	6½	7	7½	8	8½	9	9½	10	10½	11	11½	12	12½	13	13½	14	14½	15
EU	35	36	37	37	38	39	39	40	41	41	42	43	43	44	45	45	46	47	47	48	48	49	50	50	51
US	4	4½	5	5½	6	6½	7	7½	8	8½	9	9½	10	10½	11	11½	12	12½	13	13½	14	14½	15	15½	16

HAIX®-Schuhe, Produktions- und Vertriebs GmbH

Auhofstrasse 10, 84048 Mainburg, Germany
T. +49(0)8751/8625-0, F. +49(0)8751/8625-25
info@haix.de, www.haix.com