

NEPAL PRO

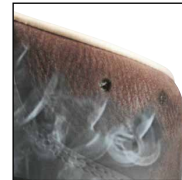
Art. No. 203308



CE EN ISO 20347:2012 O2 HRO HI CI WR FO SRC

Leather thickness 2.0 – 2.2 mm, waterproof and breathable with GORE-TEX® Extended, leg height 18.5 cm, antistatic, sole 016

Available in UK sizes 6 – 12



HAIX® Climate System



HAIX® 2-Zone Lacing



203308

Upper Material

2.0 – 2.2 mm thick, waterproof, hydrophobic and breathable leather (5.0 mg/cm²/h)

Inner lining

GORE-TEX® Extended; waterproof and breathable. Highly abrasion-resistant lining with fleece midlayer. Optimized climate comfort for all year seasons and excessive use.

Insole

Dimensionally stable, torsion-proof, avoids punctual pressure (e.g. of stones).

Insert

Comfortable, cushioning and moisture repellent. Separate heel shape for good cushioning and foot insertion. "AIRFLOW" channels.

Sole

Rubber/PU walking sole with proven street/terrain tread, wear resistant and non-slip traction; large, bevelled contact surface and superior bending comfort. Fuel-oil and heat resistance and non-marking characteristics.

HAIX® Smart Lacing

Smooth and non-pressure adjustment of the boot to the foot, Quick lock and lace pocket.

HAIX® Climate System

The HAIX® Climate system uses the pumping movement, which permits air circulation with every step – warm air is released and fresh air comes in through the vent holes at the top of the boot.

HAIX® 2-Zone Lacing

Two Zone Lacing System enables a separate adjustment of the boot to the foot and leg area.

Others

Lacing system with eyelets, pulling strap, manually applied rubber sidewall on the front and back of the shoe for a better durability, ankle protection, antistatic.

| | | | | | | | | | | | | | | | | | | | | | | | | | | | |
|----|----|----|----|----|----|----|----|----|----|----|----|----|----|-----|----|-----|----|-----|----|-----|----|-----|----|-----|----|-----|----|
| UK | 3 | 3½ | 4 | 4½ | 5 | 5½ | 6 | 6½ | 7 | 7½ | 8 | 8½ | 9 | 9½ | 10 | 10½ | 11 | 11½ | 12 | 12½ | 13 | 13½ | 14 | 14½ | 15 | 16 | |
| EU | 35 | 36 | 37 | 37 | 38 | 39 | 39 | 40 | 41 | 41 | 42 | 43 | 43 | 44 | 45 | 45 | 46 | 47 | 47 | 48 | 48 | 49 | 50 | 50 | 51 | 51 | 52 |
| US | 4 | 4½ | 5 | 5½ | 6 | 6½ | 7 | 7½ | 8 | 8½ | 9 | 9½ | 10 | 10½ | 11 | 11½ | 12 | 12½ | 13 | 13½ | 14 | 14½ | 15 | 15½ | 16 | 16½ | |