

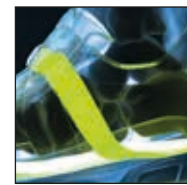
CONNEXIS® GO GTX LTR

low
Art. No. 350001

CE EN ISO 20347:2012 O2 HRO HI CI WR FO SRC

Leather, waterproof and extremely breathable with GORE-TEX®, shaft height 8 cm, sole 029

Available sizes UK 6 – 12, Extra large sizes UK 12 ½ – 15



CONNEXIS® System



Upper Material

Waterproof Leather 1.6 – 1.8 mm thick, hydrophobic, breathable

Inner lining

GORE-TEX®: waterproof and highly breathable. No water can penetrate and sweat evaporates in the form of water vapour. Abrasion-resistant inner lining with maximum climate comfort.

Insert

Comfortable, damping and moisture wicking. Separate heel cup ensures good foot guidance. „Perfect-Fit“ marking for optimal check of the correct shoe size. Washable at 30 °C.

HAIX® Absorption

Damping with damping wedge integrated into the sole. The Energy Return PU midsole absorbs and releases energy back to the wearer with every step.

Durable sole

Rubber compound for long durability.

Sole

Extremely high slip resistance with low wear due to special rubber and innovative sole construction. Slats and specially bevelled sole elements ensure optimum grip as well as high agility and stability on slippery and wet surfaces. A lightweight PU cushioning wedge provides excellent running characteristics. Very good insulation against cold, fuel-resistant and non-marking.

HAIX® CONNEXIS® System

By pulling on the fascia tape, the fasciae in the sole of the foot are lightly stimulated to reduce negative effects on the musculoskeletal system and maintain performance. Anatomical last supports the natural function of the feet. The insole has nubs with a structure and function similar to a fascia ball, which stimulate the plantar fascia while walking.

HAIX® Anti Slip

Very good adhesion on different terrain due to the profile design and the special rubber used.

HAIX® Smart Lacing System

Smooth and pressure-free adjustment of the boot to the foot, quick lock and lace pocket.

HAIX® FLEXLACE System

Elastic laces for easier on and off and even better fit to the foot.

Other

Lightweight, metal-free, soft shaft end for comfortable slipping in and out; GORE® Stretch strap construction allows the shoe to adapt individually to the foot in the instep area; synthetic back cap for stability in the heel area.

UK	3	3½	4	4½	5	5½	6	6½	7	7½	8	8½	9	9½	10	10½	11	11½	12	12½	13	13½	14	14½	15
EU	35	36	37	37	38	39	39	40	41	41	42	43	43	44	45	45	46	47	47	48	48	49	50	50	51
US	4	4½	5	5½	6	6½	7	7½	8	8½	9	9½	10	10½	11	11½	12	12½	13	13½	14	14½	15	15½	16

HAIX®-Schuhe, Produktions- und Vertriebs GmbH

Auhofstrasse 10, 84048 Mainburg, Germany
T. +49(0)8751/8625-0, F. +49(0)8751/8625-25
info@haix.de, www.haix.com